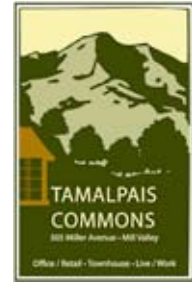


Floor Plans & Pricing - Mountainside

Mountainside
3 Bedroom, 2 ½ Bath
Single Family Home
Price - \$1,340,000



Living and Dining Area

As you walk in the front door, you step into the entry way of this approximately 1,620 square foot home. A powder room is on your left and an entry closet to your right. You'll notice the maple hardwood floors throughout the downstairs. The custom wood-framed windows fill the living room with natural light. A fireplace with a custom wood mantle and stone surrounds the hearth. As you walk towards the back of the home, you continue through the dining area to the gourmet kitchen.

Kitchen

The granite countertop with glass tile backsplash and custom maple cabinets provide a clean, warm feel to the kitchen. The SubZero refrigerator, Five Star gas range, Broan hood and Bosch dishwasher provide the necessary tools for the most discriminating chef. A free-standing butcher block island with a hanging pendant light gives additional work space for those large get-togethers. A large pantry off the main

kitchen offers additional storage.

Yard

French doors open off the kitchen to a fenced yard area. A perfect place for the barbeque, outdoor furniture or kids play equipment.

Upstairs Guest Bedrooms

From the living room ascend the stairs to the skylit hallway upstairs. A stacked washer/dryer off the hallway provides easy access to laundry facilities. Each guest bedroom has a walk-in closet and bay windows. A beautiful full bath features Crema Europa slab countertops, a Kohler tub, white and beige ceramic tiles on the walls, and earth-tone ceramic tile floors.

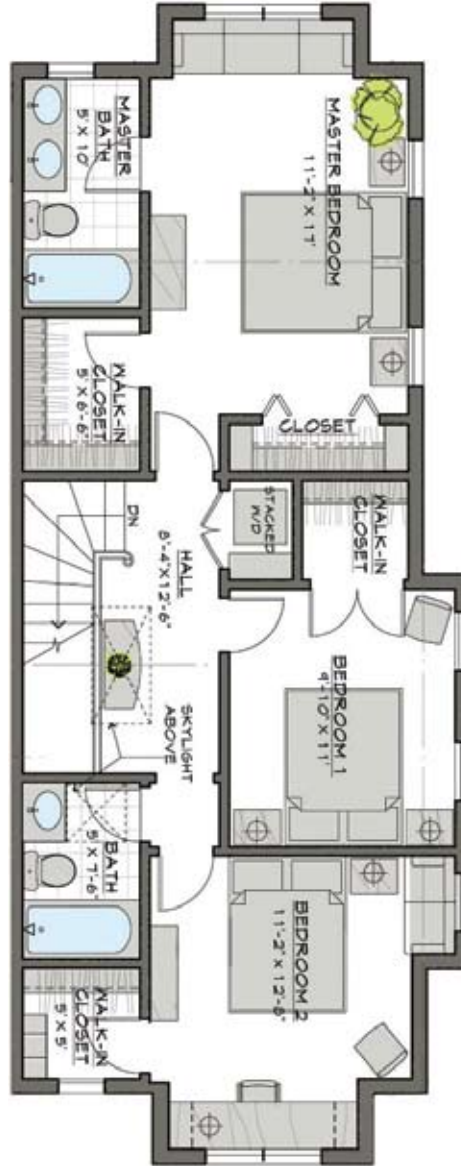
Master Bedroom and Bath

The spacious master bedroom has its own luxurious master bath and two walk-in closets. The master bath features a vessel sink on a Crema Europa slab countertop with custom maple cabinets. Vanilla-colored European tiles are enhanced with the Kohler Purist rainhead shower head, faucets and bath accessories.





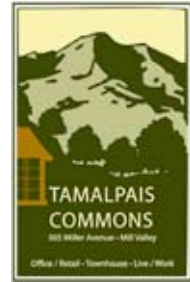
First Floor



Second Floor

Mountainside

3 Bedroom, 2 1/2 Bath
Single Family Homes



OFFERED EXCLUSIVELY BY

Kathleen Clifford
Chris Glave
Jim King

PHONE: 415-360-9199
sales@tamalpaiscommons.com
www.tamalpaiscommons.com

